

# Installation Manual

## Electric Anode

AWST6/15-R32-M-V8

AWST6/15-R32-M

AWST6/12-R32-S-V8

MGLRID GreenLine DUO

# Table of Contents

<b>1</b>	<b>Document History .....</b>	<b>2</b>
<b>2</b>	<b>Introduction .....</b>	<b>3</b>
2.1	Disclaimer .....	3
2.2	Conformity to safety regulations .....	3
<b>3</b>	<b>Safety .....</b>	<b>4</b>
3.1	Symbols used in this document.....	4
3.2	Regulations to be observed.....	4
<b>4</b>	<b>Included in the package .....</b>	<b>4</b>
<b>5</b>	<b>Before installation.....</b>	<b>5</b>
5.1	Configurations .....	5
5.2	Fittings required .....	5
<b>6</b>	<b>Installation .....</b>	<b>6</b>
6.1	Assembly .....	6
6.2	Startup .....	6

## 1 Document History

Version	Release	Version Information
1.0	April 04, 2025	First release
2.0	May 09 2025	Added adapter info for UK/Ireland

## 2 Introduction

This manual covers the installation of the electric anode into all ES indoor units that have a 250-liter storage tank. The manual is intended for installers and service personnel.

The contact surface, current and voltage of this anode is specifically designed, tested and verified to fit ES models.

An electric anode has major advantages over traditional sacrificial anodes. It gives superior corrosion protection for up to 25 years without having to be replaced. It can in addition inhibit sulfate reducing bacteria which otherwise produce smelly H<sub>2</sub>S gas.

We ask that you carefully read the manual and take into account all of the instructions regarding device installation and operation in order to prevent possible damage to the device or personnel.



Before use, read and understand this manual.

Technical data can be changed without notice because of product upgrades. Please look at the rating label on the device for latest technical specifications.

### 2.1 Disclaimer

Proper adherence to the directions provided herein is vital for both the smooth operation of this system, as well as for your safety and the safety of those around you. Energy Save is not responsible or liable for any losses incurred due to misuse or mishandling of this product, which includes, but is not limited to:

- Purchasing, installing, and/or operating this product with the intention of using it outside of its established, technical purpose.
- Carrying out improper work upon the unit, or any of its components, which has not been given explicit, prior consent in the form of writing.
- Installation attempts of this system by anyone other than a properly trained and licensed professional.
- Negligence of properly worn personal protection (safety glasses, gloves etc.) while performing installation, maintenance, or servicing of this product.
- The operation of this system during ambient temperatures which are below or beyond the temperature range intended.

### 2.2 Conformity to safety regulations

If unsure of what installation procedures to use, please contact your local distributor for information and/or advice. Any electrical work must be carried out by certified electricians only. The manufacturer is not responsible for any alterations or modifications that are made without explicit, written approval. The design of this unit complies and conforms to all necessary and relevant safety regulations and is otherwise safe to operate for its intended use.

## 3 Safety

Safety precautions must meet the requirements that apply to this type of equipment. The following recommendations should be observed in addition to the standard safety regulations that apply to the workplace.

The safety precautions stated in this manual address the most important topics for proper and safe installation and operation of the heat pump. For this reason, follow them carefully.

For further questions contact your installer or technical support from Energy Save. Contact details can be found on the last page of this document, or on the Energy Save website:

<https://energysave.se/contact/>

### 3.1 Symbols used in this document

The following attention symbols are used throughout this document.



#### WARNING

Risk of personal injury and/or damage to equipment if the instructions are not followed.

### 3.2 Regulations to be observed

Note that national and regional regulations should be observed. Statutory regulations for accident prevention and environmental protection along with specific trade norms should also be assessed prior to installation.

## 4 Included in the package

- Electric anode
- AC adapter (Europlug)
- Thread seal tape



Figure 1 Items in the package

Note:

For UK/Ireland an EU/UK adapter must be used  
(Not included in package)



Figure 2 Example of EU/UK adapter from Omnitronic

## 5 Before installation

Make sure there is an electrical outlet where the AC adapter can be plugged into. The included cable length is 3,5m.

### 5.1 Configurations

**All models with a 250L storage tank:** The electric anode is mounted on the outgoing domestic hot water pipe which is always a 1" G MALE. Fittings are needed for installation on this pipe.

**Exception:** Models newer than 2025 have a ¾" G FEMALE interface top center. If this is available and not populated by a safety device as needed in the UK, then no fittings are required.

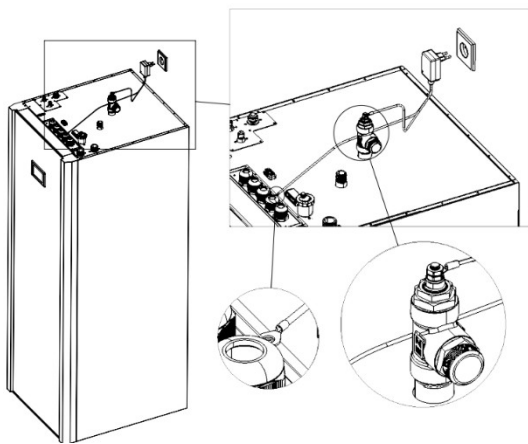


Figure 3 Anode on DHW outlet pipe (all other models)

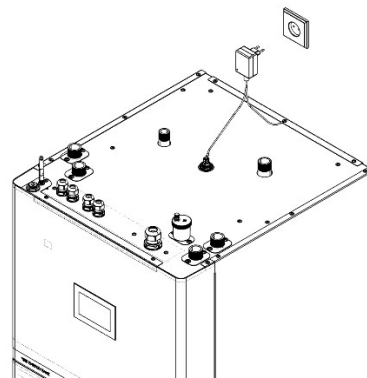
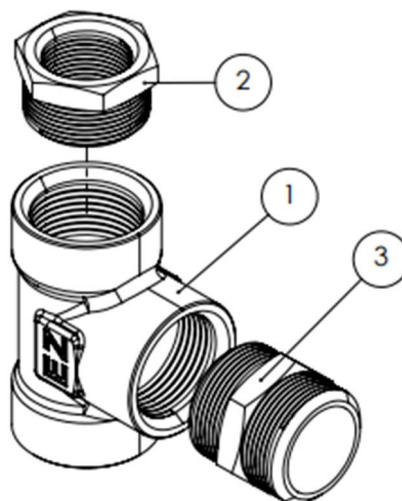


Figure 4 On newer models the anode can be installed directly on the ¾" Female interface without using fittings. Except on UK units where the outgoing water pipe is used.

### 5.2 Fittings required

Fittings are not included in the box. Thread on anode is ¾" G MALE (BSPP).

1. Fitting Tee 3 x 1" G FEMALE
2. Fitting Reducer from 1" G MALE to ¾" G FEMALE
3. Fitting adapter 1" G MALE to 1" G MALE



## 6 Installation

### 6.1 Assembly

1. Turn off system.
2. Close incoming water supply.
3. Release tank pressure by opening drain valve until pressure is gone, close drain valve.
4. Disconnect the piping to the outgoing domestic hot water.
5. Install the electric anode, use fittings if needed.
6. Connect the AC adapter's big cable lug to the anode and the small lug to a place in electrical contact with the tank. Check continuity between tank and the small lug.
7. Reinstall the piping to the outgoing water, turn on water, check for leaks.

### 6.2 Startup

1. Make sure the water in the tank is filled up.
2. Check continuity between the small cable lug mounting point to the tank exterior. There needs to be continuity for the anode to work.
3. Plug in the AC adapter into the electrical outlet.
4. The LED-light on the AC adapter should now be green indicating successful installation.
5. Turn the system back on.



#### **WARNING**

There must always be a 7-bar safety valve on the incoming water supply to the tank.



**Sweden (HQ)**

Energy Save Holding AB  
Metallgatan 2-4, SE-441 32  
Alingsås, Sweden

**Norway**

Energy Save AS  
Kirkeveien 50, 1396 Hvalstad,  
Norway

**Slovenia**

Energy Save Nordic D.O.O.  
Ulica Heroja Nandeta 37, 2000  
Maribor, Slovenia  
[www.energysave.se](http://www.energysave.se)

We reserve the right to make changes that do  
impair the functionality of the device.